

IMPAA FOUNDATION

From Sea to Port *for a Resilient Maritime Workforce*

Our Vision

Our vision is to build a resilient maritime workforce, recognising the crucial role of human expertise in safeguarding global trade and supporting a sustainable maritime future.

Serving the public benefit through education, we aim to provide opportunities for the next generation and develop a skilled international maritime workforce that upholds the highest standards of excellence, while fostering a safer, more secure, inclusive, and ultimately sustainable future for this essential industry.



MISSION PARTNERS

YOU CAN MAKE A DIFFERENCE

TEAM



“The Foundation will play a significant role in encouraging the pursuit of fulfilling careers in the maritime industry”

Capt. Simon Pelletier
Trustee & Chair



“I am proud to be a Trustee of the Foundation, helping to provide new opportunities”

Mr. Guy Platten
Trustee



“The IMPA Foundation is more than an investment in skills; it is a commitment to nurturing maritime talent”

Amb. Nancy Karigithu
Trustee



Ms. Eliane Blanch
Director

GRANTS & SCHOLARSHIP PROGRAMME

Our Approach

Targeted

Transparent

Impact-Driven

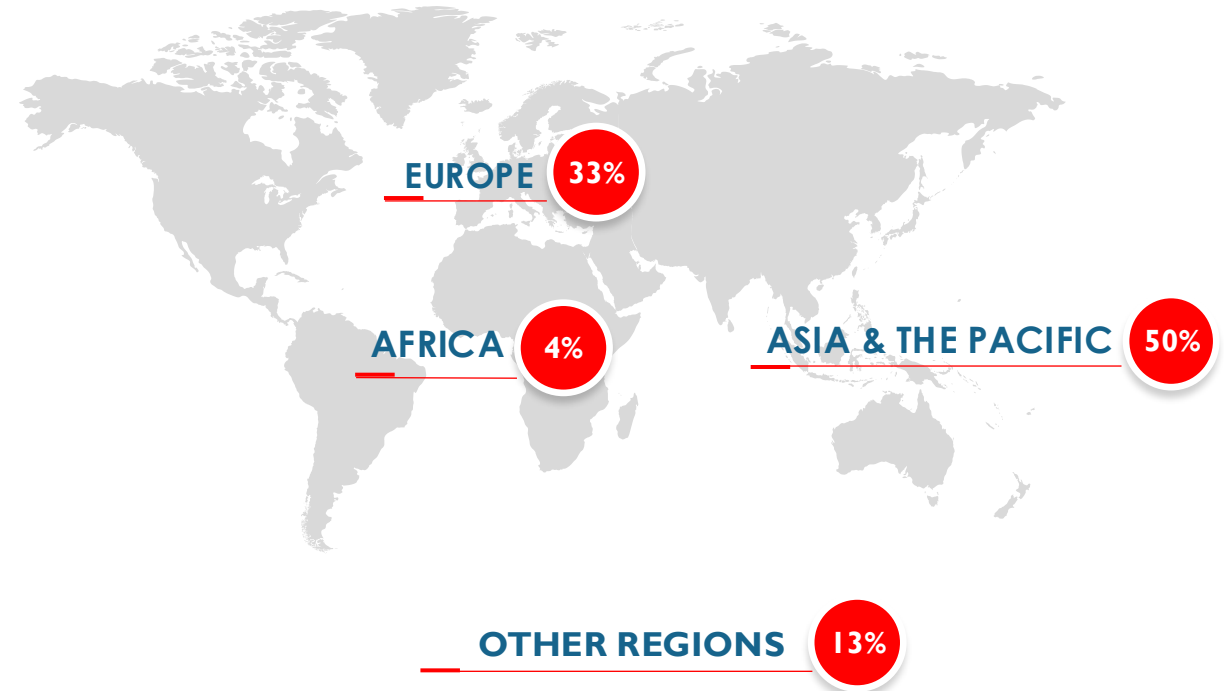
We use a structured, evidence-based process to identify priority regions and partner institutions, ensuring every donor contribution reaches the communities where it is needed most.

Regions are selected based on:

- Labour market demand for seafarers.
- Training capacity and underserved communities.
- Socio-economic and gender barriers.
- Opportunities to advance inclusion and geographic equity.

Partner Institutions must accredit:

- Full STCW compliance.
- Transparent fees and strong student support.
- Robust governance, safeguarding, and inclusion practices.



Seafarers Distribution Worldwide

Source: BIMCO/ICS, Seafarer Workforce Report, 2021; Lloyd's Register Foundation, Seafarer Sustainability Report, 2025



Why it matters?

There is a growing global demand for skilled seafarers, but financial barriers prevent many talented young people from accessing the training required to join the industry.

Maritime education boosts economic opportunity and global maritime resilience, contributing directly to Sustainable Development Goals (SDGs) 4, 5, 8, 10, 14 and 17.



The Opportunity for Donors

By supporting the IMPA Foundation, donors help:

- Train the next generation of seafarers.
- Strengthen maritime capacity in developing regions.
- Create life-changing opportunities for young people.
- Structure targeted scholarships as an active partner of the IMPA Foundation.



Accountability & Transparency

Donors will have access to GDPR-compliant, transparent reporting through two channels:

- Institutional Scholarship Report
Annual updates from partner maritime academies on scholarship recipients' academic progress and outcomes.
- IMPA Foundation Impact Report

An annual non-personal, consolidated overview of programme performance, selection processes, partnerships, and overall impact.

PARTNER & DONOR BADGE

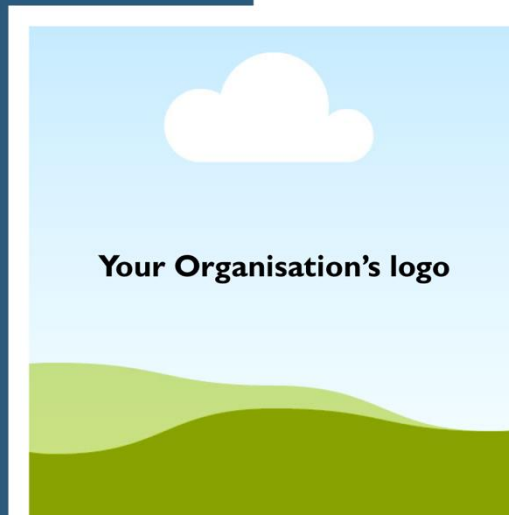
IMPAFFOUNDATION

From Sea to Port for a Resilient Maritime Workforce

Our vision and mission are to build a global maritime community where talented individuals from diverse backgrounds have equal opportunities to excel and pursue careers in the maritime and shipping sectors, fostering a skilled, inclusive, and resilient workforce for a sustainable maritime future.

info@impafoundation.com

Mission Partner:
Organisation's name



Mission Partner

Your support plays a vital role in advancing our mission, and we are delighted to showcase your involvement with a partnership badge across our social media platforms and community.



Questions?

Contact Us:

www.impafoundation.com | info@impafoundation.com